

新华

A CHNT COMPANY

上海新华控制技术集团科技有 公

968



CHNT “正泰” (CHINT ELECTRIC) 2023.05



1985 300MW 600MW 20%

90 80%

30

DEH EH

DCS

DCS PLC



- 1.
- 2.



- 1.
- 2.
3. I/O
- 4.



- 1.
- 2.
- 3.
- 4.
- 5.
- 6.
7. I/O



1. iCAN
2. iGuard
3. xAMS





NetPAC 30

iDCS Intelligent DCS,

NetPAC

NetPAC 32 NetPAC Control Unit

NCU HMI I/O

NetPAC iCAN

iGuard xAMS

- CFAST CF
- HART Profibus-DP/PA FF
- I/O
- I/O I/O I/O
- I/O
- DI 48VDC
- SOE 1/32 ms
- SV 2002D / LVDT
- LP 2003 CPLD ETS
- SD SOE 2003 CPLD OPC/AST
- LDA PLU

- All-In-One
- XML
- iGuard
- xAMS

NetPAC

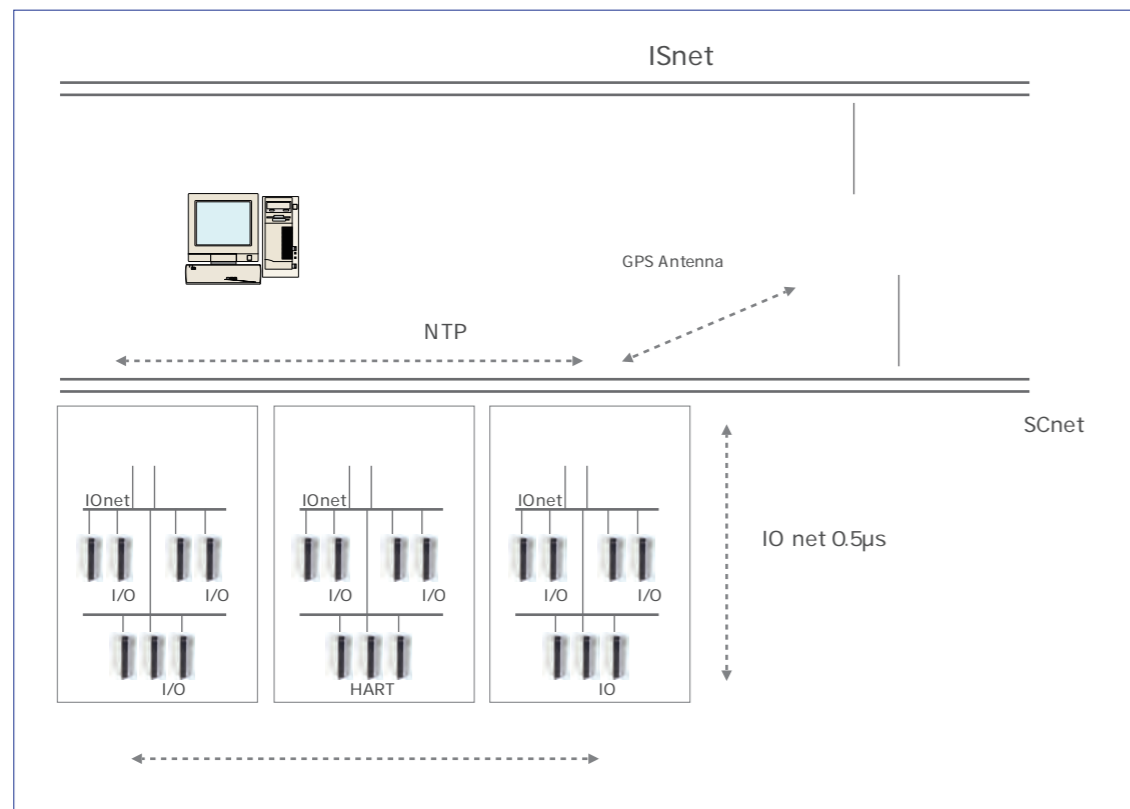
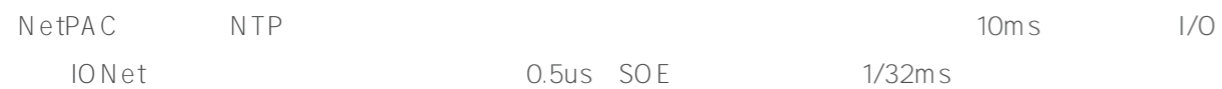
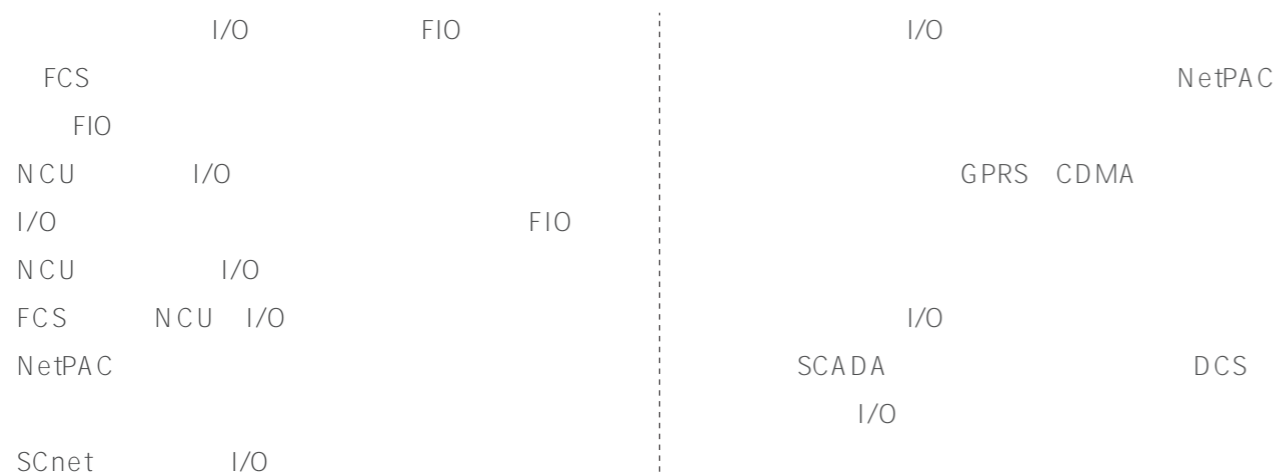
- CE/FCC/G3
- 5 8
- 10ms

- NTP I/O 10ms
- Modbus HART Profibus-DP/PA FF



NetPAC
ISNet SC-
Net I/O IONet
ISNet 100/1000Mbps
MES 5
SIS OTS DLP v N 2 S Co
CCTV e e 4
Web Internet
SCNet 100/1000Mbps
NCU HMI





WIN 7 OPU iCAN

HSU ENG

WIN 7 ENG iCAN

HSU OPU

WIN 7 HSU iCAN

LOG SOE

1 0.5 OPU

ENG

iCAN HMI WIN 7

GTW

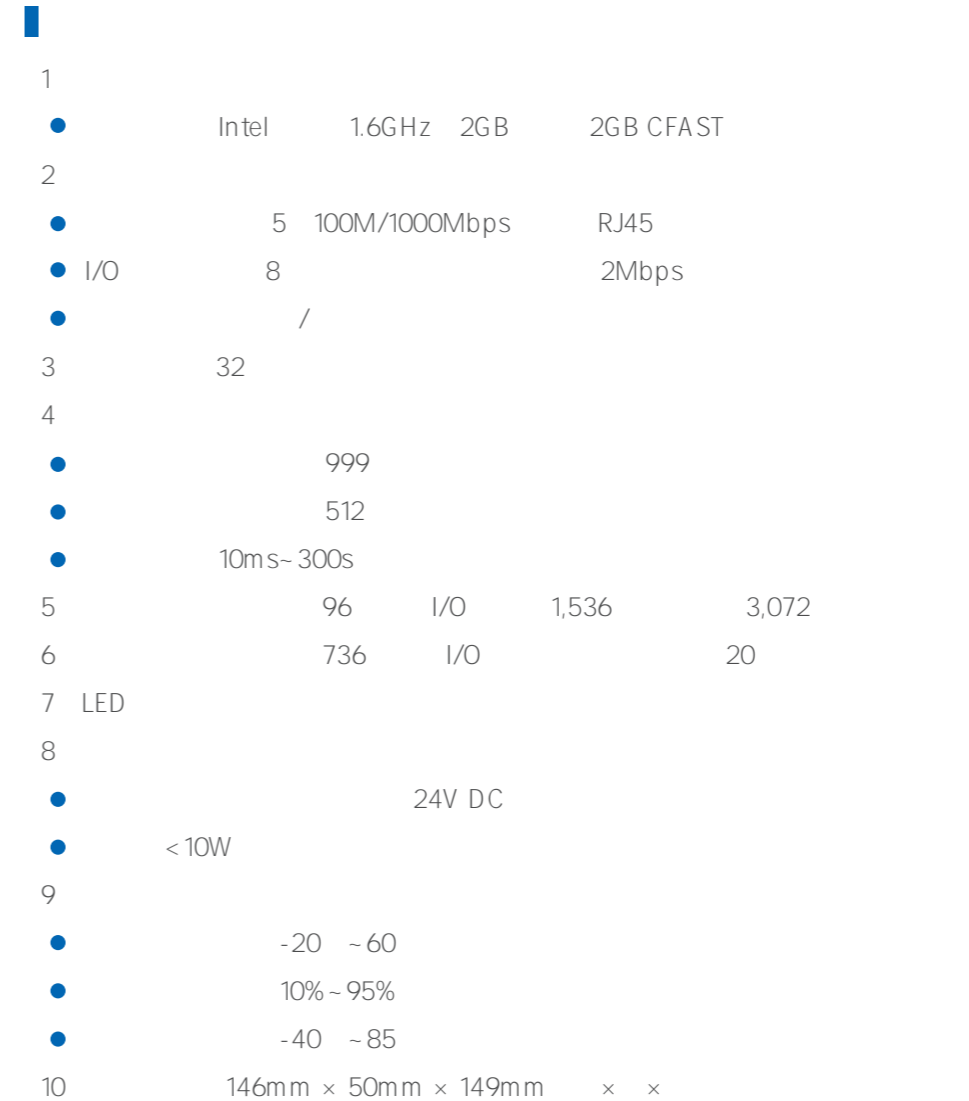
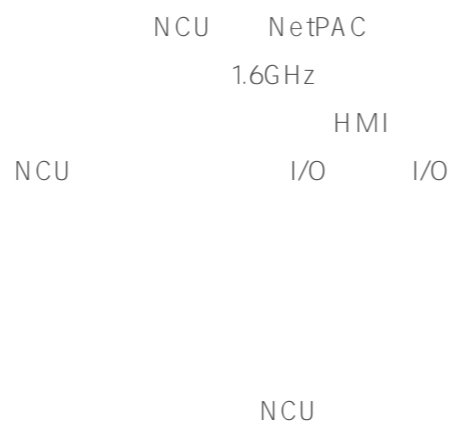
iGuard

xAMS

NetPAC

VLAN QoS ACL

-
-
-
-





I/O

- GA H
-
-
-
- ≠C
- 16/24 A/D 12 D/A
-
- ≠C
- ≠C
- A≠AC <AFH
- DE</EHG
- A cXVi g DfcZVi g-DD/DA FF



-
-
-



-
-
-
-

LA @
 K YV



-
-



-
-
-
-



-
-
-
-

EC61131-3

C

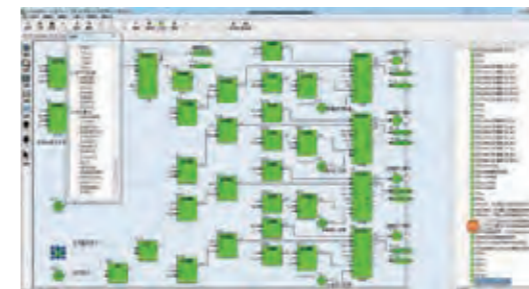


-
-



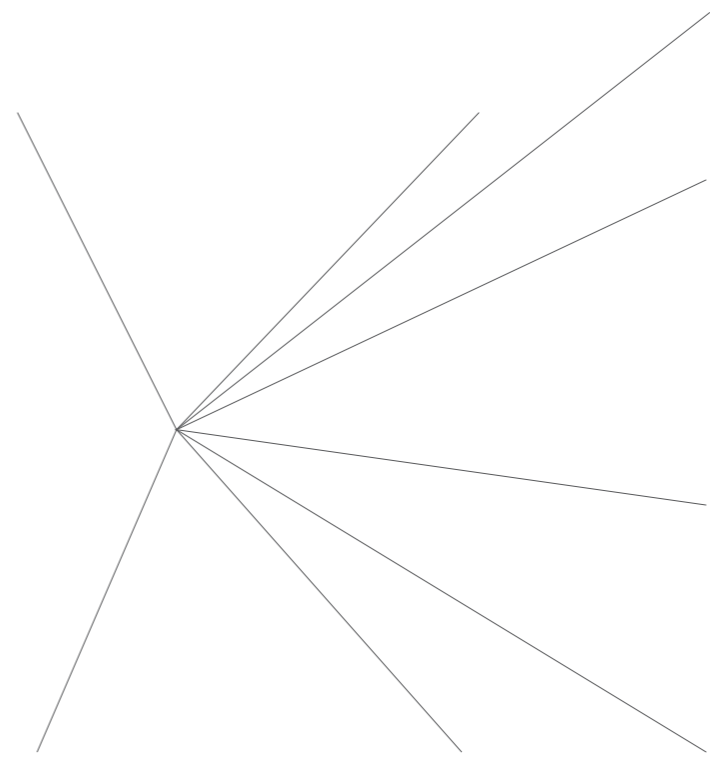
-
-
-
-

16



-
-
-

D-D



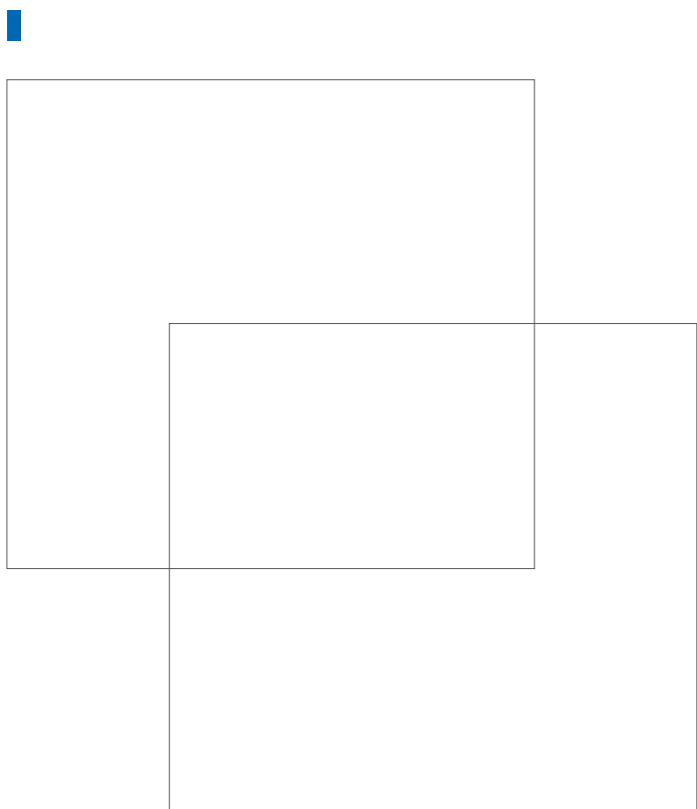
USB



-
-



-
-
-



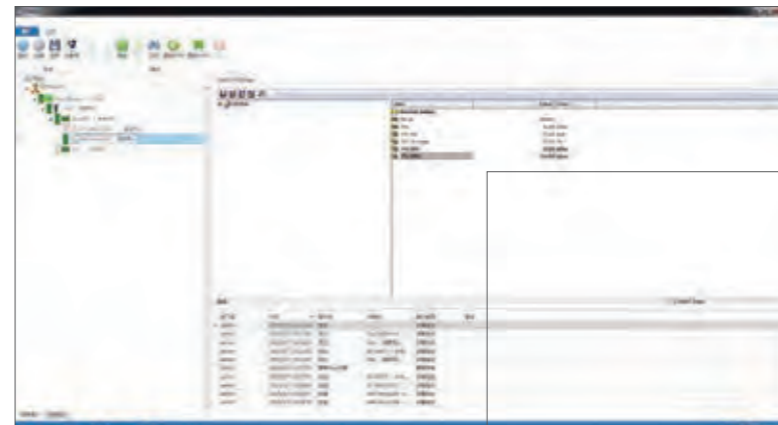
-
-



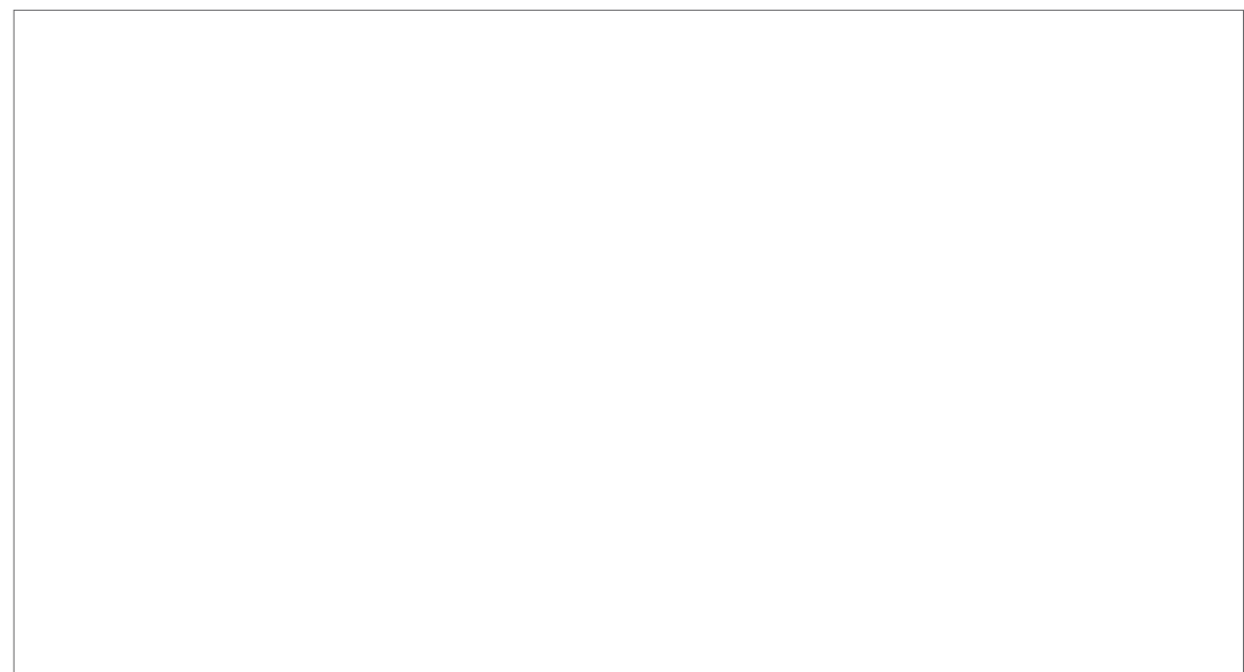
IAAG

BYRDAC

- DfcZVi g-DD <AFH FF



-



-

- K YV




			NetPAC
			NetPAC
			NetPAC
			NetPAC
			37
			+ 37
			DEH
			I/O
			4 RS485
			Profibus-DP
			I/O
			4 RS485
			Profibus-DP


			8
			16 Hart
			8
			8 Hart
			16 (48V)
			32 (48V)
			16 (48V)
			16
			32
			8
			8
			8
			DEH
			DEH
			DEH
			ETS
			16
			16
			8
			8
			16
			DEH
			ETS




	24VDC 1 1
	ARM Cortex-M3/M0 CPU 50MHz
I/O	2Mbps 0.5µs
	120 x 40 x 120mm x x
	CFR 47 FCC Part 15 ANSI C63.4-2014 IEC 61000-3-2/3 IEC 61000-4-2/3/4/5/6/8/11 ANSI/ISA 71.04-2013
	-20 ~ +60 -40 ~ +85 10 ~ 95%, 10-500Hz 10m/s ² 2500m 0.5uis, 18,000 /L
	CE FCC G3


		0(4)- 20mA
		± 10%,
		0.1%
		16 AD 500k/s
		400VDC 1500VDC
		> 120dB > 60dB
		< 2W < 4W


		4- 20mA, HART
		± 10%,
		0.1%
		16 AD 500k/s
		> 120dB > 60dB
		< 2W < 8W

		0(4)- 20mA
		1000
		0.2%
		12 D/A, D/A
		1000VDC 1500VDC
		< 2W, < 5W

		4~20mA, HART
		1000
		0.2%
		12 D/A, D/A
		<2W <8W

		
		, 3~50ms , 20ms
		LED
		1000VDC 1500VDC
		<1W <2W

		
		, 3~50ms , 20ms
		LED
		1000VDC 1500VDC
		<1W <4W

		
	SOE	0.25ms
		, 3~50ms , 8ms
		LED
		1000VDC 1500VDC
		<1W <2W

		, 1NO/1NC 24VDC/130mA
		NDOT-21() •10A @ 250VAC(); 10A @ 30VDC(); •7.5A @ 250VAC(); 6A @ 30VDC()
		NDOT-231/232() •10A @ 220VDC (); 16A @ 400V AC (); •2A @ 220VDC (); 3.6A @ 110V DC()
		LED
		1000VDC 1500VDC
		<1W <0.8W

		1 PID	
		2 LVDT	
		2	
		2	
		7	
		1	
		LVDT 3 /6	
		AI: ±5V/±20mA <0.1	
		AO: 4~20mA/0~5V ±20mA <0.2	
		DI: (48VDC)	
		DO: 30VDC/1A	
		LED	
	LED		
		1000VDC 1500VDC	
		<1W <2W	=0W <4W

		1	
		6	
		6	
		2	
		>200mV (48VDC)	
		, PhotoMOS <50	
		0-10KHz	
		0.1 RPM 16 , >50 RPM <10ms	
		1000VDC 1500VDC	
		<3W, <3W	

		24	
		6	
		48VDC	
		60V/50mA	
		1000VDC 1500VDC	
		<1W, <0.2W	